



Airside™ Guidance Sign ICAO



AGSI

Compliances: ICAO Annex 14

Applications

ICAO Airside™ signs Model AGSI are designed for use on airport taxiways and runways to mark taxi routes and intersections. Colors may be black on yellow, yellow on black, or white on red depending on the application as defined by ICAO, Annex 14.

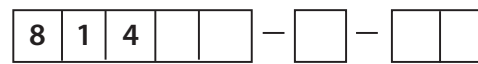
Features

- The extruded aluminum sign is designed in accordance with U.S. FAA Standards for structural integrity
- White exterior standard
- Metric hardware
- ETL certified ICAO illumination levels
- Long life fluorescent lamps
- Modular design with uniform leg spacing
- Two lamps per module
- Slip-in sign faces with translucent messages
- Frangible couplings may be pre-installed on pad and sign lowered onto them for easy installation
- Enclosed power entry through sign leg or
- Enclosed power entry through flexible liquidtight conduit (Option 11)
- External power disconnect switch breaks all electrical connections to the sign for safe maintenance
- Operates from a 3 or 5 step series lighting circuit (2.8 to 6.6 Amperes)
- Operating temperature: -20C to +55C

Ordering Information

How to Order: To determine the exact number of modules to fit your message, contact Crouse-Hinds. To construct the catalog number, insert appropriate numerical code for sign size, number of faces and number of lamp modules, as shown below. Add option numbers as required.

Order isolation transformer, transformer housing, coverplate and gasket or baseplate, and connector kit separately. The colors of the sign faces and the legends must be specified for each sign. Multiple messages and colors may appear on a sign face.



Type:

Size:

- 3 = Sign, 300 mm Legend Height
- 4 = Sign, 400 mm Legend Height

Number of Faces:

- 1 = Single Face
- 2 = Double Face

Number of Lamp Modules: 1 to 4*

Options:

- 10 = Unenclosed Power Cable: 3 Ft. (0.9m) with Plug
- 11 = Flexible Liquidtight Conduit Enclosed 3 Ft. (0.9m) Power Cable
- 13 = Tethers (2)
- Y = Yellow Exterior

* Maximum of (4) Modules for sign. If more modules are required, two signs may be co-located.

Technical Data

Instruction Manual: 2508

ICAO Airside™ Guidance Signs (AGSI) Measured Load (VA) & Power Factor (PF)

Lamp Modules	Isolation Transformer (Wattages)	*Small CCR (Series Type)		*Large CCR (Shunt Type)	
		VA	PF	VA	PF
1	150w	150	.68	140	.87
2	300w	335	.71	295	.87
3	400w**	460	.72	426	.87
4	2 x 300w	600	.78	575	.87

* Select appropriate data depending whether on a circuit is powered by CROUSE-HINDS small CCR (4, 7.5 & 10KW) or large CCR (10KW shunt type & larger).

** Use 400w transformer (33154) or two 200w transformers (33006) with consolidating harness (26811-27)

Average Sign Illuminance* at Full Brightness

Size	Color		
	Red	Yellow	White
300mm	111(32.4)	582 (170)	931 (272.3)
400mm	106 (30.8)	465 (135)	668 (195.6)

* CD/M2 (FOOT-LAMBERTS)

Average Sign Illuminance at Various Intensity Steps

6.6 Amperes = 100% (Full Brightness—CCR Top Step)

5.5 Amperes = 84%

5.2 Amperes = 80%

4.8 Amperes = 75%

4.1 Amperes = 62%

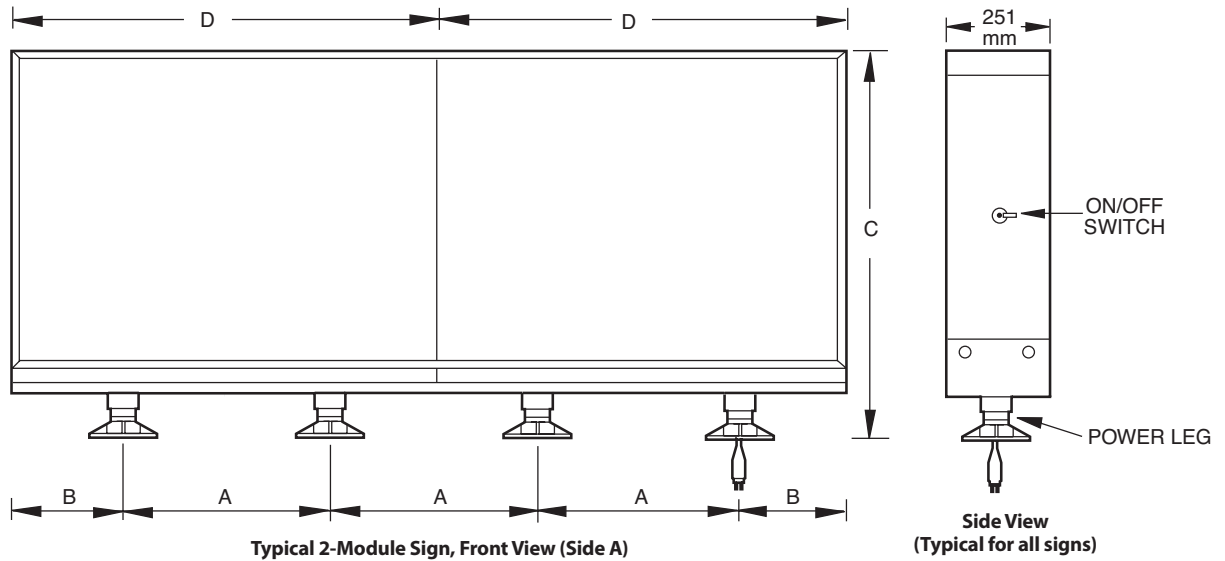
3.4 Amperes = 48%

2.8 Amperes = 35%

Note: The above data may vary depending on the type and manufacturer of constant current regulator (CCR) and circuit loading.



Dimensional Information



Sign Power Leg Orientation

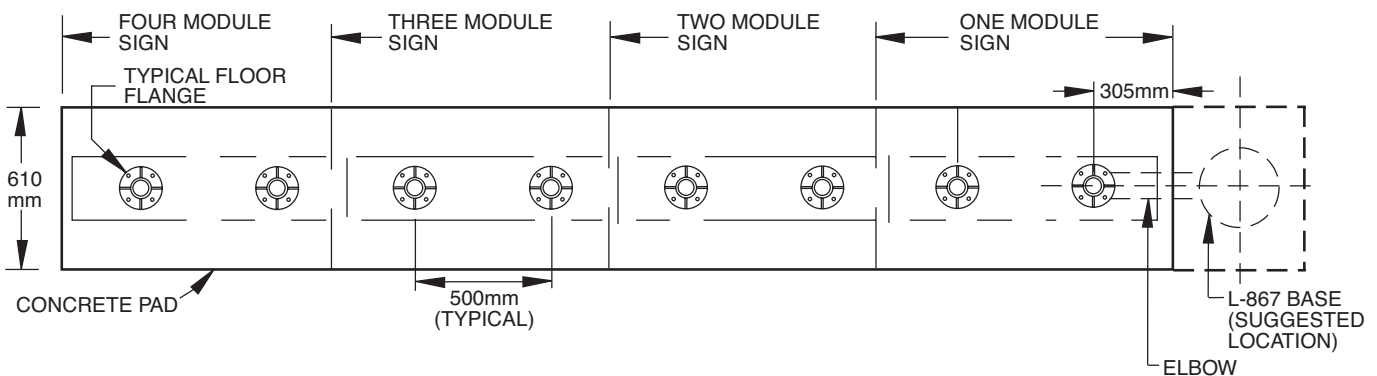
When facing side A, the power entry is on the right. Orders should always specify the message orientation.

Legend Size	A	B 1 Mod	B 2 Mod	C	D
300mm	500mm	217mm	183mm	827mm	933mm
400mm	500mm	217mm	183mm	1025mm	933mm

Dimensions: Millimeters, **Instruction Manual:** 2508. For signs manufactured prior to 2005, refer to manual 9604 for replacement parts and sign housing footing drawings.

Foot Print Information

2 Legs per module.



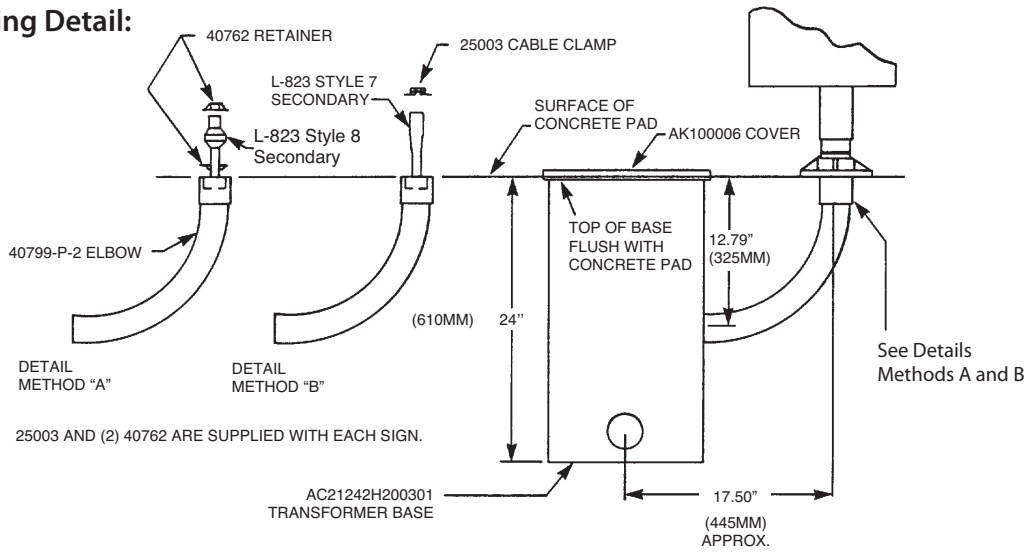
Shipping Weights and Volumes:

		Modules							
		1		2		3		4	
		lbs. (kg.)	cu.ft. (cu.m)	lbs. (kg.)	cu.ft. (cu.m)	lbs. (kg.)	cu.ft. (cu.m)	lbs. (kg.)	cu.ft. (cu.m)
Sign Size (Legend Height)	300	90 (40.8)	8.5 (0.24)	180 (81.6)	17.0 (0.48)	270 (122.5)	25.5 (0.72)	360 (163.3)	34.0 (0.96)
	400	115 (52.2)	11.3 (0.32)	230 (104.3)	22.6 (0.64)	345 (156.5)	34.0 (0.96)	460 (208.7)	45.3 (1.28)

NOTE: For estimating sign length, use two characters per module. Do not count a dot, dash, or 1 as a character except when the message contains an M or W.

Installation Details

Elbow Mounting Detail:



Accessories

Part Number	Description	Shipping Weight		Shipping Volume	
		Lbs.	Kg.	Cu.Ft.	Cu.M.
33150	Isolation Transformer 150 watts, 6.6/6.6A	16	7.3	0.4	0.011
33006	Isolation Transformer 200 watts, 6.6/6.6A	16	7.3	0.4	0.011
33010	Isolation Transformer 300 watts, 6.6/6.6A	23.0	10.4	0.6	0.017
33154	Isolation Transformer 400 watts, 6.6/6.6A	23.0	10.4	0.6	0.017
AK100006	Coverplate, 0.375 inches thick	5.0	2.3	0.13	0.004
AC21242H200301	L-867B Transformer Base, 24 inches deep	16.0	7.3	2.5	0.074
10530287	Gasket for Coverplate				
823KP-D4-D4	Primary L-823 Connector Kit				
26811-27	Consolidating Harness				
CAS1M-PR-B-2	Secondary Cable Assembly, 2 meters*				
60728-1	Tether				

* Other lengths available.

Renewal Parts

Part Number	Description
62245-3	Frangible Coupling for sign with 400 mm length height
60683-8	Frangible Coupling for sign with 300 mm length height
10047-2391	Socket, Plunger End
10047-2392	Socket, Stationary End
10047-1573	Fluorescent Lamp, 36"
61164	Ballast Assembly
61065-4	Lamp Bypass P.C. Board
62217-1	Sign Panel, 400mm, Single Module
62217-2	Sign Panel, 300mm, Single Module
62217-3	Sign Panel, 400mm, Double Module
62217-4	Sign Panel, 300mm, Double Module

