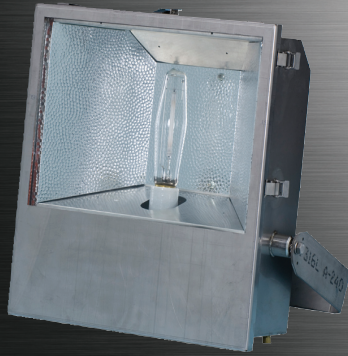


Haz

HazFlood Vulcan/ss



FEATURES

- 150 - 400w HID.
- Suitable for T3 temperature code requirements at up to a 55°C ambient.
- Trunnion attachment points positioned at fixture balance point. Allows for crane boom mounting with optional bracket.
- Choice of mounting arrangements in surface, pole or wall.
- Integral safety cable attachment points.
- Field replaceable thermal shock resistant tempered glass lens.
- High temperature silicone gasket provides a watertight seal.
- Two 3/4" NPT entries for feed-through/looping wiring. M25 entry reducers available.
- Tested and approved over 180° aiming range, enabling face up through face down mounting.
- Tool less entry via eight stainless steel over the center cam latches.
- Captive lens frame with stainless steel door retainers for easy lamp replacement.
- Wide NEMA 6 x 6 beam spread, optional 5 x 5.

APPLICATIONS

- T3 Hazardous locations
- Marine and watertight requirements
- Oil and gas exploration and production
- Petrochemical facilities
- Waste water treatment plants
- Pulp and paper production
- Aluminum processing facilities
- Salt and potash mines
- High ambient environments
- Corrosive environments

APPROVALS

- Class I Zone 2 AEx nR II T3
- Ex nR II T3
- Class I Division 2 Groups A, B, C & D
- Class I Zone 2 Groups IIA, IIB, IIB + H2 & IIC
- Type 4X
- Certified IP66 and IP67
- Marine Outside Type Saltwater
- ABS

STANDARDS

- UL 844 - Hazardous Locations
- UL 2279 - Electrical Equipment for Zone Areas
- UL 1598A - Luminaires for Marine Vessels
- CSA - E60079-15:02
- CSA - C22.2 No. 137-M1981

TECHNICAL SPECIFICATIONS

HOUSING/LENS FRAME

Type 316 stainless steel.

WIND RATING

EPA 4.38 at vertical.

MOUNTING BRACKET

Type 316 stainless steel trunnion bracket. Please see SPARE PARTS for additional selections.

REFLECTORS

Hammertone aluminum.

ENTRIES

Two 3/4" NPT. Reducer entries for M25 available.

LENS

Tempered glass.

GASKET

One piece silicone.

GUARD

Optional, type 316 stainless steel.

VISOR

Optional, top and side, type 316 stainless steel.

BALLAST

Standard: Multi-tap 120/208/240/277v 60 Hz.

Optional: 220v, 347v, or 480v 60Hz, and 220v or 240v 50Hz.

Optional: Remote ballast suitable for use up to 50 feet from luminaire.

LAMP HOLDER

Mogul base, porcelain.

LAMP TYPES

High Pressure Sodium, Metal Halide* and Pulse Start Metal Halide. Luminaires supplied without lamps.

*Not available in the U.S.

ORDERING REFERENCES

PART NUMBER	LAMP TYPE	WATTAGE	WEIGHT LBS	ANSI LAMP TYPE	T-CODE	AMBIENT TEMP	SUPPLY WIRE TEMP
RBFLS15IB	High Pressure Sodium	150w	47.5	S55	T3	40/55°C	90/110°C
RBFLS25IB	High Pressure Sodium	250w	56.0	S50	T3	40/55°C	90/110°C
RBFLS4IB	High Pressure Sodium	400w	58.5	S51	T3	40/55°C	90/110°C
RBFHS17IB*	Metal Halide	175w	51.5	M57	T3	40/55°C	90/110°C
RBFHS25IB*	Metal Halide	250w	50.5	M58	T3	40/55°C	90/110°C
RBFHS4IB*	Metal Halide	400w	56.5	M59	T3	40/55°C	90/110°C
RBFPS25IB	Pulse Start Metal Halide	250w	50.5	M153	T3	40/55°C	90/110°C
RBFPS4IB	Pulse Start Metal Halide	400w	56.5	M155	T3	40/55°C	90/110°C

*Not available in the U.S.

SPECIAL OPTIONS

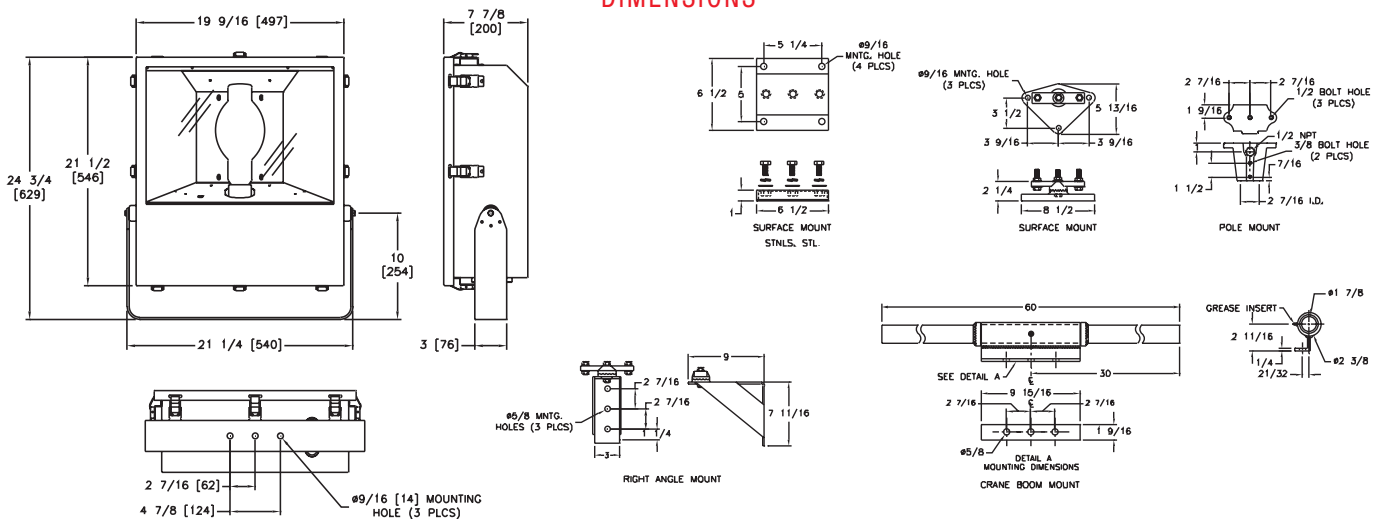
- | | | | |
|------|---|------|----------------------------------|
| C | - Auxiliary Quartz Light (Light continuator) | -346 | - 347v 60Hz |
| I | - Instant Restrike (Up to 150w High Pressure Sodium only) | -486 | - 480v 60Hz |
| LI | - Instant Restrike Lamp (250w and 400w High Pressure Sodium only) | G* | - Stainless Steel Guard |
| -225 | - 220v 50Hz | V* | - Top and Side Visor |
| -226 | - 220v 60Hz | N | - Narrow NEMA 4 x 6 Beam Pattern |
| -245 | - 240v 50Hz | L | - Lamp Included |

*Cannot be field installed, specify at order placement.

SPARE PARTS

Part No.	Description
INX5015	BALLAST, High Pressure Sodium 150w
INX5021	BALLAST, High Pressure Sodium 250w
INX5019	BALLAST, High Pressure Sodium 400w
INX5102	BALLAST, Metal Halide 250w
INX5033	BALLAST, Metal Halide 400w
INX5245	BALLAST, Pulse Start Metal Halide 250w
INX5246	BALLAST, Pulse Start Metal Halide 400w
INX3651	LAMP, High Pressure Sodium 150w
INX3546	LAMP, High Pressure Sodium 250w
INX3517	LAMP, High Pressure Sodium 400w
INX3541	LAMP, Metal Halide 250w
INX3524	LAMP, Metal Halide 400w
INX3733	LAMP, Pulse Start Metal Halide 250w
INX3734	LAMP, Pulse Start Metal Halide 400w
INX4004	LAMP HOLDER
INX2203	LENS
GKT5093	GASKET
INX1064	GUARD
INX6261	VISOR
INX6848	M25 CABLE ENTRY REDUCERS (set of 2)
INX7007SS	MOUNTING, Surface Stainless Steel
INX7006A	MOUNTING, Pole Aluminum
INX7006SS	MOUNTING, Pole Stainless Steel
INX7091	MOUNTING, Pole Stainless Steel (No cable feed-thru)
INX7058S	MOUNTING, Right Angled Wall Stainless Steel
INX7001	MOUNTING, Crane Boom Painted Steel
SC30H	SAFETY CABLE, 48" Stainless Steel, Snap Hook

DIMENSIONS



Dimensions in inches [millimeters]