

New LED version!

Down Light



FEATURES

- LED over 600 lumens.
 - 50,000 hours lamp life with 70% maintained lumens, equals low maintenance and less total cost of ownership.
 - 14 watts equals less energy consumed for cooler living quarters compared to other light sources.
 - Increase of available current per circuit compared to other light sources.
 - 3000°K warm white light with dimming functionality.
- Low profile, 4 inch depth, allows for installation in constricted ceiling voids.
- Available with sealed diffuser.
- Integral balance support provides vibration dampening.

APPLICATIONS

- Recessed mount
- Marine interior
- Galleys
- Remodeling
- Shallow ceiling cavities
- Over head lighting in stairwells and passageways

CERTIFICATIONS & COMPLIANCE

- Conforms to IP22
- Conforms to IP45 with a sealed diffuser
- Marine Inside Drip Proof Type
- UL 1598A - Luminaires for Marine Vessels
- ABS
- Insulation Contact (IC) rated for contact with noncombustible mineral wool insulation

TECHNICAL SPECIFICATIONS

HOUSING

Zinc coated steel with an electrostatically applied white polyester powder coat finish. Component tray easily removed for field access and wiring.

TRIM RINGS

Zinc coated steel with an electrostatically applied white polyester powder coat finish. Available in a variety of colors and finishes. See SPECIAL OPTIONS for details.

REFLECTOR

Compact fluorescent & incandescent include highly specular aluminum reflector. Optional alodine gold finish. Halogen and MR utilize reflector style lamps.

ENTRIES

2 concentric 1/2" or 3/4" NPT knockouts.

LAMP TYPE

LED and MR-16 luminaires lamps provided. Compact fluorescent, halogen PAR and incandescent lamps not provided.

MOUNTING

Recessed ceiling type. Integral balance support provides vibration dampening. See drawings for detail.

TERMINAL BLOCK

3 pole.

CONTROL GEAR

MR-16 is provided with an electronic low voltage transformer. Compact fluorescent luminaires provided with a 120v 60Hz electronic ballast. 120V 60Hz LED driver. See ORDERING REFERENCES for other options.

EMERGENCY BATTERY BACKUP BALLAST

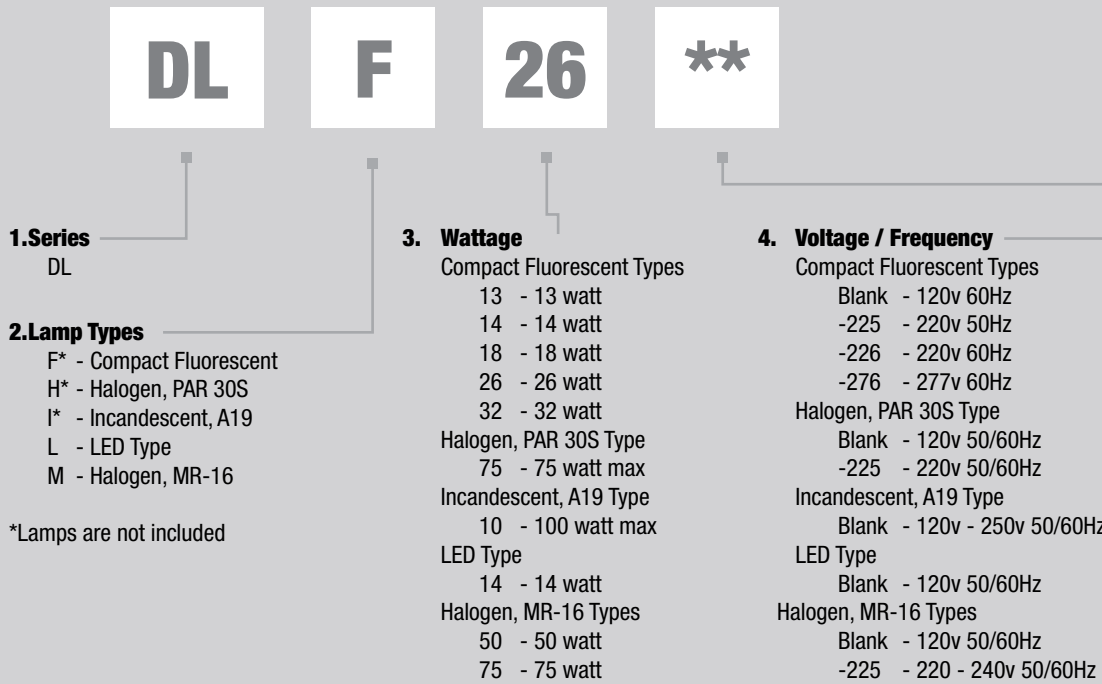
Optional, remote self contained 240 minute minimum. Compact fluorescent models. LED model 90 minutes.*

* Not UL listed.

Lamp Wattage	Ballast/Socket Type	ANSI Lamp Code	Starting Temp	Maximum Ambient (IC/NIC)**
13	GX24q-1	CFQ13w	0°F / -18°C	25°/55°C
14	LED	N/A	-22°F / -30°C	25°/40°C
18	GX24q-2	CFQ18w	0°F / -18°C	25°/55°C
26	GX24q-3	CFQ26w	0°F / -18°C	25°/55°C
32	GX24q-3	CFQ32w	0°F / -18°C	25°/55°C

**Insulation Contact (IC); Non-Insulation Contact (NIC)

ORDERING REFERENCES



SPECIAL OPTIONS

All models:

- B - Polished Brass Finish Trim Ring
- C - Chrome Plated Trim Ring
- D - Trim Ring with glass diffuser
- S* - Sealed Diffuser on Trim Ring (Conforms to IP45)
- F - Frosted Center, clear edge
- H - Clear Center, frosted edge

*For compact fluorescent, incandescent or LED up to 60w max.

Compact Fluorescent lamp:

- EM - Emergency Battery Backup Ballast, 277v max, remote
- DIM - Dimmable Ballast
- G - Gold Color Finish Reflector
- RV - Red DR Acrylic Diffuser (26 watt max)
- BV - Blue Lens - Night Vision Compatible (26 watt max)
- X - Trim Ring with clear polycarbonate diffuser
- 225 - 220v 50Hz
- 226 - 220v 60Hz
- 276 - 277v 60Hz

Incandescent lamp:

- G - Gold Color Finish Reflector

LED Type:

- RV - Red DR Acrylic Diffuser
- BV - Blue DR Acrylic Diffuser - Night Vision Compatible
- X - Trim Ring with clear polycarbonate diffuser

Halogen MR-16 lamp:

- 225 - 220-240v 50/60Hz

TRIM RING SPARE PARTS

Example: **DLTBDF**

Trim Ring Marine Brass with Glass Diffuser, Frosted Center, Clear Edge - Stand-Off

- | | |
|---------------------------------------|-------|
| 1. Downlight Trim Ring | DLT |
| 2. Trim Ring Color | |
| White (standard) | W |
| Marine Brass finish | B |
| Chrome plated | C |
| 3. Diffuser Mount | |
| Stand-off | Blank |
| Sealed (models to 60W) | S |
| 4. Diffuser Style | |
| Glass | D |
| Red DR acrylic (LED and CF 26w only) | RV |
| Blue Lens (LED and CF 26w only) | BV |
| Polycarbonate Clear (LED and CF only) | X |
| 5. Lens Style (for glass only) | |
| Clear glass | Blank |
| Frosted center, clear edge | F |
| Clear center, frosted edge | H |

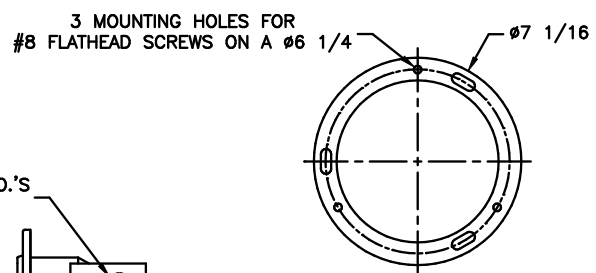
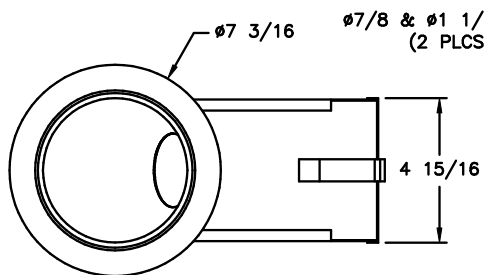
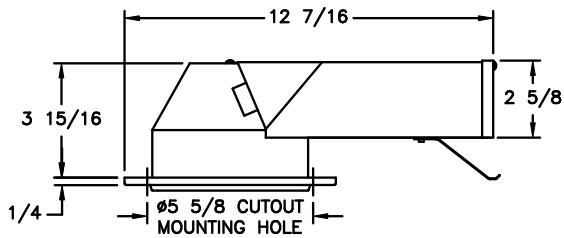
Cooper Wiring Devices - LED Rated Dimmers	
Model	Part Number
Aspire	9573
Skye	SLC03P
Devine	DLC03P

Down Light

SPARE PARTS

Part No.	Description
FX5206	COMPACT FLUORESCENT, BALLAST, 120v 60Hz, 13, 18, 26 or 32 watt
FX3531	LAMP, 13w, Compact Fluorescent
FX3552	LAMP, 18w, Compact Fluorescent
FX3553	LAMP, 26w, Compact Fluorescent
FX3554	LAMP, 32w, Compact Fluorescent
FX4042	LAMP HOLDER, 13w, Compact Fluorescent
FX4030	LAMP HOLDER, 18w, Compact Fluorescent
FX4034	LAMP HOLDER, 26w, Compact Fluorescent
FX4034	LAMP HOLDER, 32w, Compact Fluorescent
INX3728	LAMP, PAR 30S, Halogen
INX3730	LAMP, 50w Halogen MR-16
INX3731	LAMP, 50w Halogen MR-16
INX5243	MR-16 TRANSFORMER, 120v 60Hz, Halogen
INX4109	LAMP HOLDER MR-16, 120v 60Hz, Halogen
INX3528	LAMP, 100w A-19, Incandescent
INX4087	LAMP HOLDER, 100w A-19, Incandescent
INX3749	LED LAMP AND DRIVER

DIMENSIONS



MOUNTING DIMENSIONS

Dimensions in inches