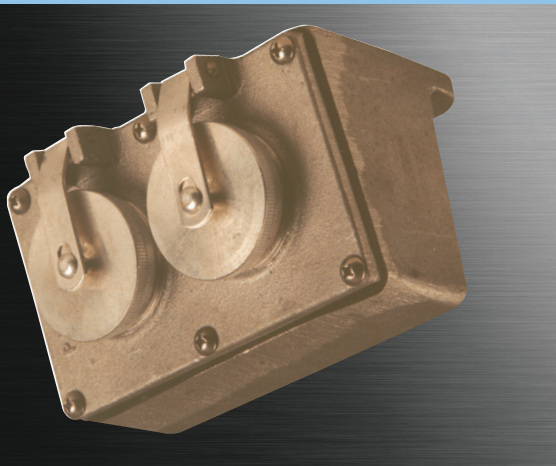


# Pro

## ProConnect 25/mw



### FEATURES

- Watertight straight blade ANSI NEMA type receptacle.
- Water shedding wall mount design.
- Accepts standard ANSI NEMA type plugs.
- Optional double pole rotary switch combinations.
- Available mating metal or nylon plugs with integral threaded ring maintain a watertight seal.
- Cast marine brass or copper free aluminum construction available.
- Captive threaded receptacle cap.
- Neoprene gasket resists petroleum.
- Heavy duty mounting pads.
- Silicone lubricant provided for cover screws and flange.
- Available in 125v AC and 250v AC.
- Receptacles will accept 15 or 20 Amp plugs.

### APPLICATIONS

- Marine and watertight requirements

### APPROVALS

- Conforms to IP66
- ABS

### TECHNICAL SPECIFICATION

#### BOX/COVER

Cast marine brass or copper free aluminum.

#### CAPS/RING

Marine brass or zinc plated brass.

#### HARDWARE

Stainless steel.

#### GASKET

One piece neoprene.

#### ENTRIES

Standard units undrilled. Up to 3/4" NPT through feed available. See ENTRY OPTIONS for selections.

#### VOLTAGE AND CURRENT

##### RECEPTACLE

15/20 Amp 125v AC ANSI NEMA 5-15/20R

15/20 Amp 250v AC ANSI NEMA 6-15/20R

#### VOLTAGE AND CURRENT

##### SWITCH

20 Amp 120/240v AC

1 HP at 120v AC or 2 HP at 240v AC

#### VOLTAGE AND CURRENT

##### PLUG

15 Amp 125v AC ANSI NEMA 5-15P

20 Amp 125v AC ANSI NEMA 5-20P

15 Amp 250v AC ANSI NEMA 6-15P

20 AMP 250v AC ANSI NEMA 6-20P

##### PLUG BODY

A Series: Zinc plated brass with a PBT enclosure

B Series: Brass with a PBT enclosure

N Series: Nylon

##### MOUNTING

Surface, via two maximum 1/4" mounting bolts (not included).

## ORDERING REFERENCES

PART NUMBER	DESCRIPTION	WEIGHT LBS
2590B-125	BRASS, One Receptacle	3.0
2592B-125	BRASS, Two Receptacles	5.0
2597B-125	BRASS, One Receptacle with Switch	4.0
2503B-125	BRASS, 15 Amp Plug	0.8
2506B-125	BRASS, 20 Amp Plug	0.8
2590A-125	ALUMINUM, One Receptacle	1.0
2592A-125	ALUMINUM, Two Receptacles	1.8
2503A-125	ALUMINUM, 15 Amp Plug	0.8
2506A-125	ALUMINUM, 20 Amp Plug	0.8
2503N-125	NYLON, 15 Amp Plug	0.5
2506N-125	NYLON, 20 Amp Plug	0.5

## SPECIAL OPTIONS

-250\*    - 250v AC

\*Replace -125 part number.

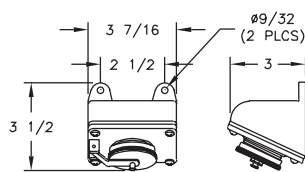
## ENTRY OPTIONS

NPT Trade Size	Dead End	Thru Feed
1/2"	E1	C1
3/4"	E2	C2

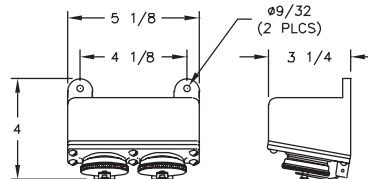
## SPARE PARTS

Part No.	Description
INX6526B	COVER, One Receptacle, BRASS
INX6526A	COVER, One Receptacle, ALUMINUM
INX6527B	COVER, Two Receptacles, BRASS
INX6527A	COVER, Two Receptacles, ALUMINUM
INX6529B	COVER, One Receptacle with Switch, BRASS
INX6011B	BOX, One Receptacle, BRASS
INX6011A	BOX, One Receptacle, ALUMINUM
INX6012B	BOX, Two Receptacles or One with Switch, BRASS
INX6012A	BOX, Two Receptacles or One with Switch, ALUMINUM
INX8002B	KNOB AND SHAFT ASSEMBLY, BRASS
INX8002A	KNOB AND SHAFT ASSEMBLY, ALUMINUM
INX8008B	CAP, BRASS
INX8008A	CAP, ALUMINUM
GKT4000	GASKET, One Receptacle
GKT5001	GASKET, Two Receptacles or One with Switch
INX3192	SWITCH
INX3396	INTERIOR, 15 AMP, Metal Plug 125V
INX3397	INTERIOR, 15 AMP, Metal Plug 250V
2503NR-125	INTERIOR, 15 AMP, Nylon Plug 125V
2503NR-250	INTERIOR, 15 AMP, Nylon Plug 250V
INX3398	INTERIOR, 20 AMP, Metal Plug 125V
INX3399	INTERIOR, 20 AMP, Metal Plug 250V
2506NR-125	INTERIOR, 20 AMP, Nylon Plug 125V
2506NR-250	INTERIOR, 20 AMP, Nylon Plug 250v
INX3181	INTERIOR, Receptacle 125V
INX3182	INTERIOR, Receptacle 250V

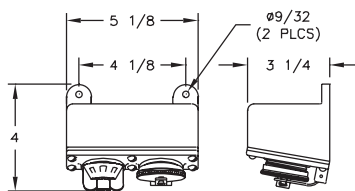
## DIMENSIONS



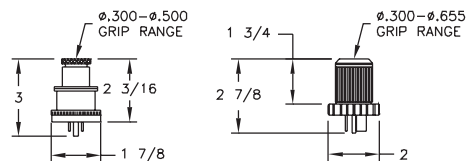
2590B/A-125



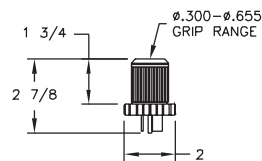
2592B/A-125



2597B/A-125



2503B/A-125  
2506B/A-125



2503N-125/2506N-125

Dimensions in inches