

# Pro

## ProFlood Goliath 2000/al



### FEATURES

- 70 - 175w HID.
- Compact design for maximum mounting flexibility.
- Field replaceable, thermal shock resistant tempered glass lens.
- High temperature silicone gasket provide a watertight seal.
- Tool less entry via eight positive locking stainless steel latches.
- Captive lens frame with stainless steel door retainers for easy lamp replacement.
- Optional safety cable attachment points.
- Remote ballast available.
- Tested and approved over 180° aiming range, enabling face up through face down mounting.
- Wide NEMA 7 x 6 beam spread.
- Optional vibration resistant lamp holder.
- Choice of mounting arrangements in surface, pole, right angle and crane boom (via a modified housing).

### APPLICATIONS

- Marine & watertight requirements
- Dusttight requiremetns
- Waste water treatment plants
- Pulp and paper production
- Corrosive environments
- Façade security lighting

### APPROVALS

- Type 4X
- Conforms to IP66
- ABS

### STANDARDS

- UL 1598 - Luminaires
- CSA - C22.2 No. 250-04

### TECHNICAL SPECIFICATIONS

#### HOUSING

Copper free aluminum with an electrostatically applied white polyester powder coat finish.

#### WIND RATING

EPA - 2.24 at vertical.

#### LENS FRAME

Type 316 stainless steel.

#### MOUNTING BRACKETS

Type 316 stainless steel trunnion mount. Please see SPARE PARTS for additional selections.

#### REFLECTORS

Hammertone aluminum.

#### ENTRIES

One 3/4" NPT.

#### LENS

Tempered glass.

#### BALLAST

Standard: Multi-tap 120/208/240/277v 60 Hz.

Optional: 220v, 347v, or 480v 60Hz, and 220v or 240v 50Hz.

Optional: Remote ballast suitable for use up to 50 feet from luminaire.

#### GASKET

One piece silicone.

#### GUARD

Optional, type 316 stainless steel.

#### VISOR

Optional, top or top and side, copper free aluminum with an electrostatically applied white polyester powder coat finish.

#### LAMP HOLDER

Mogul base, porcelain.

#### LAMP TYPES

High Pressure Sodium, Metal Halide\* and Pulse Start Metal Halide. Luminaires supplied without lamps.

\*Not available in the U.S.

## ORDERING REFERENCES

PART NUMBER	LAMP TYPE	WATTAGE	WEIGHT LBS	ANSI LAMP TYPE	AMBIENT TEMP	SUPPLY WIRE TEMP
PHIDLA7IB	High Pressure Sodium	70w	21.0	S62	40°C	110°C
PHIDLA11B	High Pressure Sodium	100w	23.0	S54	40°C	110°C
PHIDLA15IB	High Pressure Sodium	150w	24.0	S55	40°C	110°C
PHIDHA17IB*	Metal Halide	175w	22.0	M57	40°C	125°C
PHIDPA15IB	Pulse Start Metal Halide	150w	24.0	M102	40°C	110°C
PHIDPA17IB	Pulse Start Metal Halide	175w	23.0	M152	40°C	125°C

\*Not available in the U.S.

## SPECIAL OPTIONS

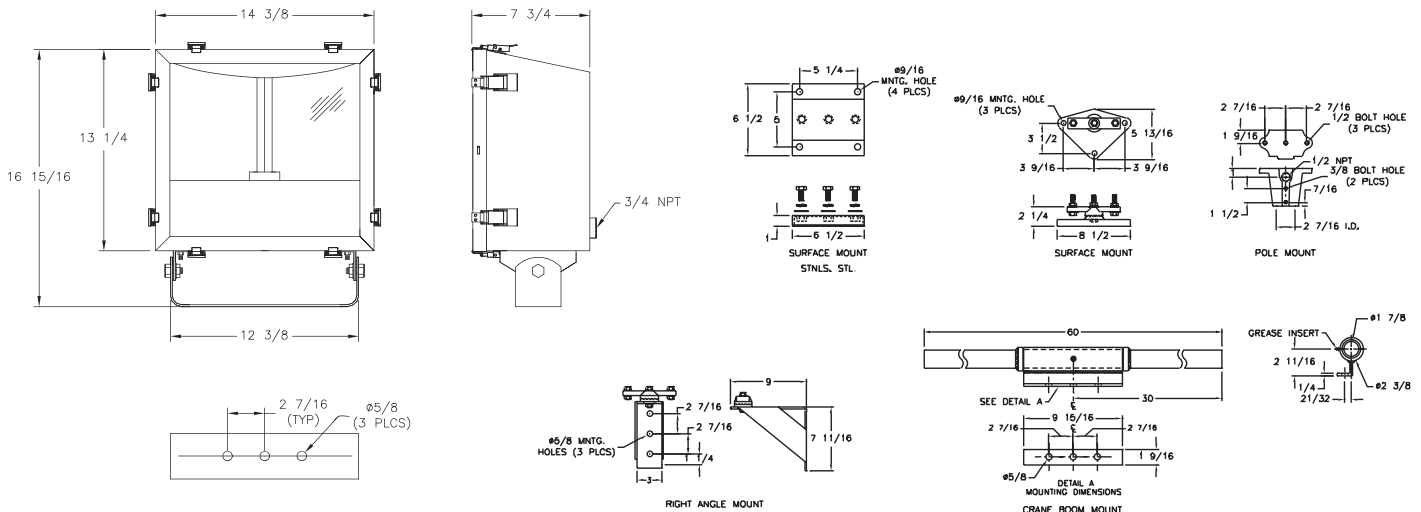
LC - Auxiliary Quartz Light (Light continuator)	-486 - 480v 60Hz
F - Fused Ballast	RB* - Remote Ballast
IR - Instant Restrike (High Pressure Sodium only)	SP - Vibration Resistant Lamp Holder
W* - Dual Safety Cable Attachment Points	G* - Stainless Steel Guard
-225 - 220v 50Hz	CB* - Crane Boom Modified Housing (Includes option SP)
-226 - 220v 60Hz	TV* - Top Visor
-245 - 240v 50Hz	SV* - Top and Side Visor
-346 - 347v 60Hz	

\*Cannot be field installed, specify at order placement.

## SPARE PARTS

Part No.	Description
INX5087	BALLAST, High Pressure Sodium 70W
INX5014	BALLAST, High Pressure Sodium 100W
INX5015	BALLAST, High Pressure Sodium 150W
INX5022	BALLAST, Metal Halide 175w
INX5263	BALLAST, Pulse Start Metal Halide 150w
INX5244	BALLAST, Pulse Start Metal Halide 175w
INX3662	LAMP, High Pressure Sodium 70w
INX3535	LAMP, High Pressure Sodium 100W
INX3651	LAMP, High Pressure Sodium 150W
INX3557	LAMP, Metal Halide 175W
INX3744	LAMP, Pulse Start Metal Halide 150W
INX3732	LAMP, Pulse Start Metal Halide 175W
INX4100	LAMP HOLDER
INX2152	LENS
GKT6089-49	GASKET
INX7007A	MOUNTING, Surface Aluminum
INX7007SS	MOUNTING, Surface Stainless Steel
INX7006A	MOUNTING, Pole Aluminum
INX7006SS	MOUNTING, Pole Stainless Steel
INX7091	MOUNTING, Pole Stainless Steel (No cable feed thru)
INX7058S	MOUNTING, Right Angle
INX7001	MOUNTING, Crane Boom (Requires crane boom housing)
SC30H	SAFETY CABLE, 48" Stainless Steel, Snap Hook

## DIMENSIONS



Dimensions in inches