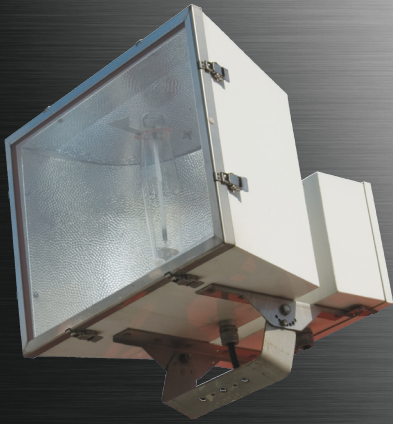


# Pro

## ProFlood Goliath 2020/al



### FEATURES

- 1000w HID.
- Ballast gear housed in separate, attached enclosure. Allows for easy access and cool running operation.
- Field replaceable, thermal shock resistant tempered glass lens.
- High temperature silicone gaskets provide a watertight seal.
- Tool less entry via eight positive locking stainless steel latches.
- Captive lens frame with stainless steel door retainers for easy lamp replacement.
- Optional safety cable attachment points.
- Remote ballast available.
- Tested and approved over 180° aiming range, enabling face up through face down mounting.
- Very wide NEMA 7 x 7 beam spread.
- Optional vibration resistant lamp holder.
- Choice of mounting arrangements in surface, pole and crane boom (via a modified housing).

### APPLICATIONS

- Marine & watertight requirements
- Dusttight requirements
- Waste water treatment plants
- Pulp and paper production
- Corrosive environments
- Façade security lighting

### APPROVALS

- Type 4X
- Conforms to IP66
- ABS

### STANDARDS

- UL 1598 - Luminaires
- CSA - C22.2 No. 250-04

### TECHNICAL SPECIFICATIONS

#### HOUSING

Copper free aluminum with an electrostatically applied white polyester powder coat finish.

#### WIND RATING

EPA - 5.39 at vertical.

#### LENS FRAME

Type 316 stainless steel.

#### MOUNTING BRACKETS

Type 316 stainless steel trunnion mount. Please see SPARE PARTS for additional selections.

#### REFLECTORS

Hammertone aluminum.

#### ENTRIES

One 3/4" NPT.

#### LENS

Tempered glass.

#### GASKETS

One piece silicone.

#### GUARD

Optional, type 316 stainless steel.

#### BALLAST

Standard: Multi-tap 120/208/240/277v 60Hz.  
Optional: 220v, 347v, or 480v 60Hz, and 220v or 240v 50Hz.  
Optional: Remote ballast suitable for use up to 50 feet from luminaire.

#### LAMP HOLDER

Mogul base, porcelain.

#### LAMP TYPES

High Pressure Sodium, Metal Halide and Pulse Start Metal Halide. Luminaires supplied without lamps.

