

Pro

ProGuard 1440/al



FEATURES

- Low profile heavy duty cargo hold or pit light.
- Designed for severe and harsh environments.
- Available in 100w incandescent. Suitable for self ballasted compact fluorescent.
- Hinged guard and captive hardware for ease of relamping.
- Neoprene gaskets resist petroleum and provide a watertight seal.

APPLICATIONS

- Marine and watertight requirements
- Transportation / exploration vessels
- Ferries
- Tankers
- Cargo hold lighting
- Pit lighting

APPROVALS

- Conforms to IP 66
- Marine Outside Type Saltwater
- ABS

STANDARDS

- UL 1598A - Luminaires for Marine Vessels

TECHNICAL SPECIFICATIONS

HOUSING & GUARD

Cast copper free aluminum.

REFLECTOR

Type 5052H32 aluminum with an electrostatically applied white polyester powder coat finish. Minimum 90% reflectance.

HARDWARE

Stainless steel.

ENTRIES

Standard units undrilled. Up to 3/4" NPT four way available. See ENTRY OPTIONS for selections.

GASKETS

One piece neoprene.

MOUNTING

Ceiling type.

LAMP HOLDER

Medium base, phenolic.

GLOBE

Clear impact resistant glass.

LAMP TYPE

A-19 100w max or self ballasted compact fluorescent. Lamp not provided.

VOLTAGE

Rated for use to 250v AC.

TERMINAL BLOCK

Four pole 20 Amp terminal block provided.

ORDERING REFERENCES

PART NUMBER	DESCRIPTION	LAMP MAX	WEIGHT LBS
1440A	Cargo Hold	A-19 100w	5.8

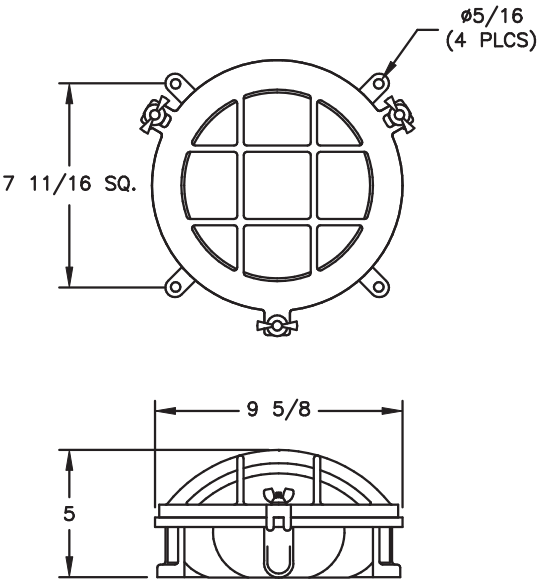
ENTRY OPTIONS

NPT Trade Size	Dead End	Thru Feed	90 Degree	X-Positions
1/2"	E1	C1	L1	X1
3/4"	E2	C2	L2	X2

SPARE PARTS

Part No.	Description		
INX4081	LAMP HOLDER, Phenolic	GKT1019SIL	GASKET, 100w Lens
INX1048A	GUARD, 100w	GKT1025	GASKET, 100w Housing
INX2143	GLOBE, 100w Clear	CX3070	TERMINAL BLOCK, 4 pole
INX3528	LAMP, 100w		

DIMENSIONS



1440

Dimensions in inches