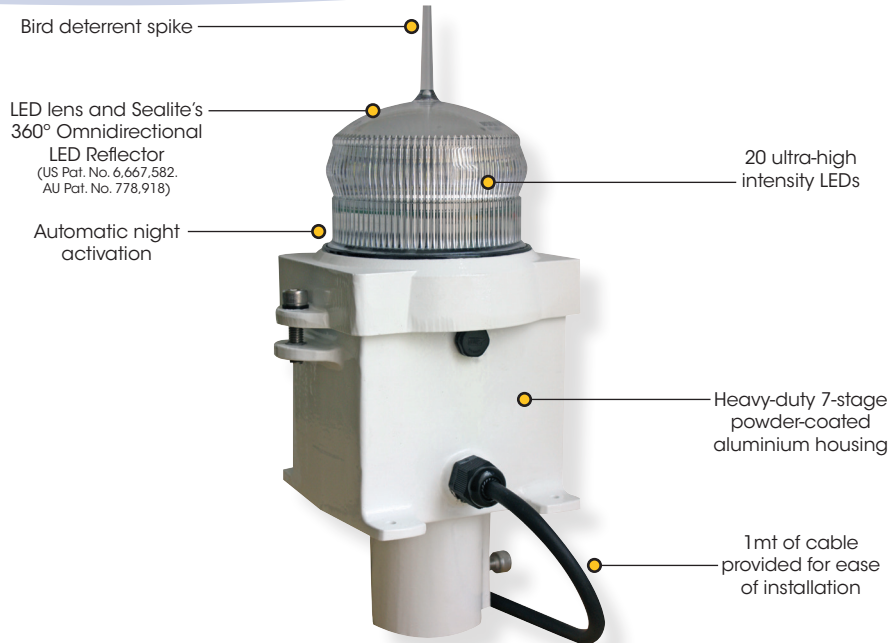


# SL10

## 1-5nm+ Heavy-Duty LED Light Fixture



### The Sealite Advantage

- 1-5+ nautical mile range
- 256 user-adjustable flash characteristics
- 4 adjustable intensity settings
- Operates in conjunction with existing or purpose-built power supplies
- Interchangeable 20 LED flasher unit & replaceable lens assembly

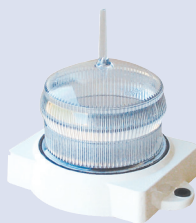
The SL10 is a heavy-duty LED Light Fixture designed to operate in conjunction with existing or purpose-built power supplies and offer maintenance-free service over a wide range of environmental conditions.

With a variable range of 1 to 5nm+, a maintenance-free light source and 256 user adjustable flash codes, the SL10 series of LED lights is the preferred choice of buoy manufacturers seeking to fit a heavy-duty marine lantern to existing or independently designed power sources.

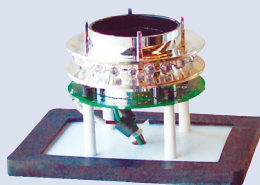
The SL10 is available in a number of configurations, colours and cable lengths and is the perfect replacement for obsolete incandescent lights in extreme environments.

The tough polycarbonate lens is specifically designed for use with LEDs, and incorporates an environment-friendly spike – deterring unwelcome bird life. The lens design also ensures that vessel operators clearly see the light from above, when passing the AtoN.

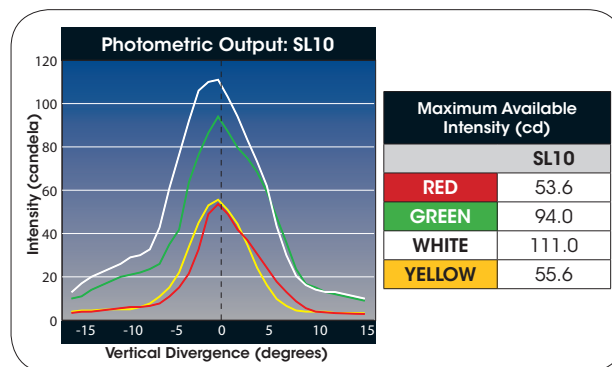
Flash adjustment is achieved via two (2) rotary switches – accessed on the internally housed digital flasher unit. For easy installation, 1m of cable is supplied as standard.



Lens assembly



Interchangeable Digital Flasher unit

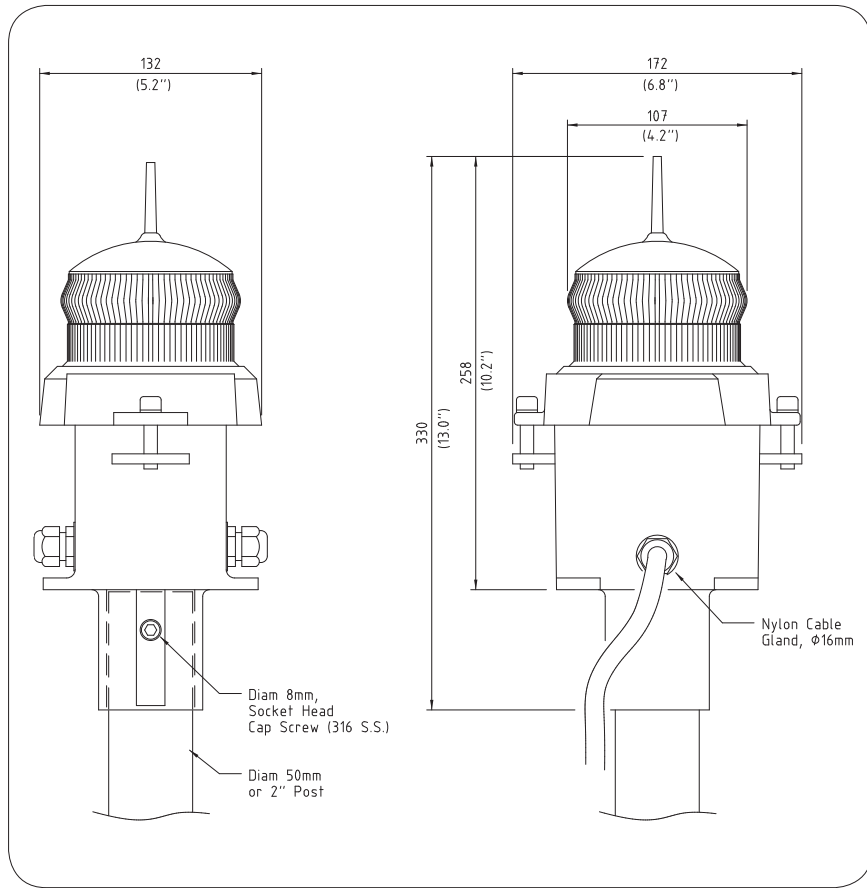
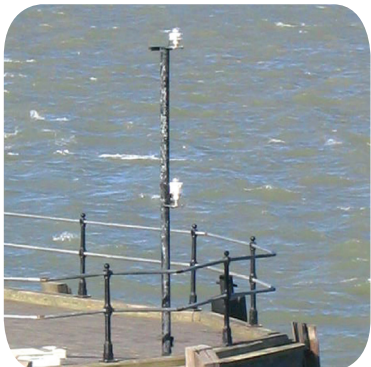
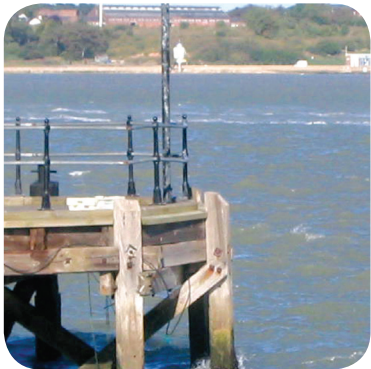


# SL10

## 1-5nm+ Heavy-Duty LED Light Fixture



SL10 Dual Pier Lights, Harwich Harbour, United Kingdom



### SPECIFICATIONS •

#### Light Characteristics

Light Source	20 ultra-high intensity LEDs
Available Colours	Red, Green, White, Yellow, Blue
Maximum Available Intensity (cd)†	Red - 53.6 Green - 94.0 White - 111.0 Yellow - 55.6
Visible Range (nm)	1-5+
Horizontal Output (degrees)	360
Vertical Divergence (degrees)	9
Reflector Type	Omnidirectional 360° LED Reflector (US Pat. No. 6,667,582. AU Pat. No. 778,918)

#### Available Flash Characteristics

Intensity Adjustments	Up to 256 IALA recommended (user adjustable)
LED Life Expectancy (hours)	Adjustable in 25% increments >100,000

#### Electrical Characteristics

Current Draw (mA)	180 (nominal)
Circuit Protection	Integrated
Nominal Voltage (V)	12
Temperature Range	-40 to 80°C

#### Physical Characteristics

Body Material	7-stage powder-coated aluminium
Lens Material	LEXAN® Polycarbonate - UV-stabilised
Lens Diameter (mm/inches)	107 / 4 <sup>1</sup> / <sub>4</sub>
Lens Design	External optics with interior flute design
Mounting	50mm OD pole
Height (mm/inches)	330 / 13
Width (mm/inches)	172 / 6 <sup>3</sup> / <sub>4</sub>
Mass (kg/lbs)	1.7 / 3 <sup>3</sup> / <sub>4</sub>
Product Life Expectancy	Up to 12 years

#### Certifications

CE	EN61000-6-3:1997. EN61000-6-1:1997
Quality Assurance	ISO9001:2008

#### Intellectual Property

Patents	US Pat. No. 6,667,582. AU Pat. No. 778,918
Trademarks	SEALITE® is a registered trademark of Sealite Pty Ltd
Warranty *	3 years

#### Options Available

- 200mm OD mounting plate
- Additional cable

• Specifications subject to change or variation without notice  
 \* Subject to standard terms and conditions  
 † Intensity setting subject to solar availability

