

# SLC310

## 3-5nm+ Solar Marine Lantern

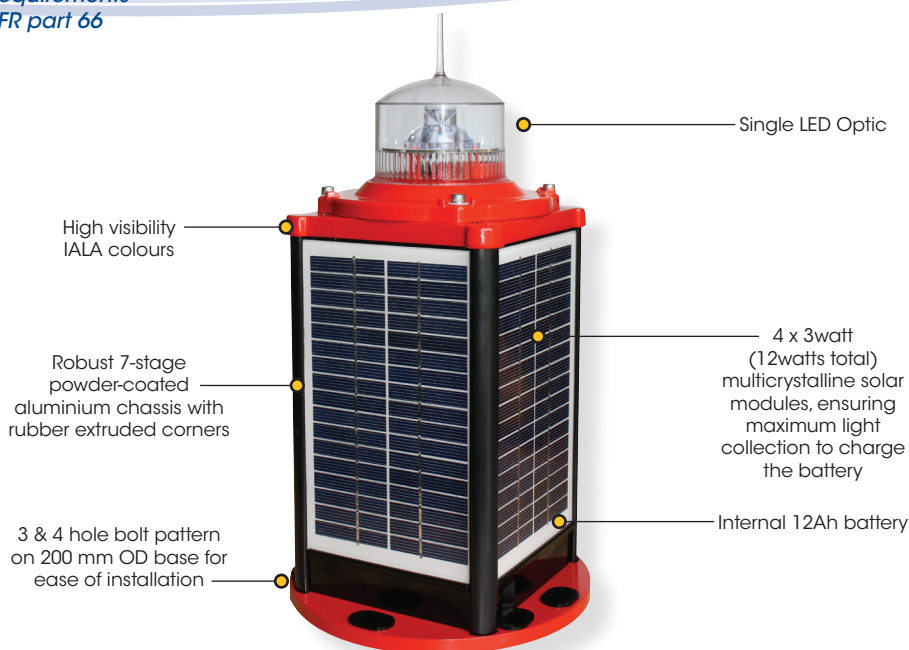
*This equipment complies with requirements of the U.S. Coast Guard in 33 CFR part 66*

**Next  
Generation**

Single LED Optic ...  
Brighter, more efficient



Available with optional  
IR Controller



### The Sealite Advantage

- IR programmable
- Fitted with on-board GPS as standard for synchronised flashing
- Single, high powered LED for superior light output
- Simplicity of design ensures ease of maintenance in the field
- Heavy-duty aluminium construction
- All components user-replaceable in the unlikely event of damage
- 200mm OD base pattern for immediate installation on existing structures
- User-replaceable battery
- 256 IALA flash patterns
- IP68 waterproof
- 3 year warranty

**The SLC310 is a robust, completely self-contained 3-5nm+ Solar LED Lantern specifically designed to withstand the tough marine environment, providing years of reliable, low-maintenance service. The 3 & 4 hole bolt pattern base fits directly onto existing 200mm OD industry standard mounts for ease of installation.**

The SLC310 uses the Sealite single-LED optic, and provides the highest power to light output ratio of any light in its class, making it brighter and more efficient. The light will provide up to 176cd (white) or up to 6nm visible range, in a small self-contained package.

The base and top of the SLC310 are made from cast aluminium, subject to 7-stage powder-coating in high visibility IALA colours for daytime recognition, with UV-stabilised rubber corners and gaskets providing a superior IP68 waterproof rating – the best in the industry.

Four (4) premium-grade solar modules are integrated into the assembly, and mounted to collect sunlight at all angles.

The tough, polycarbonate lens is specifically designed for use with LEDs and incorporates an environment-friendly spike – deterring unwelcome bird life. The lens design also ensures that vessel operators clearly see the light from above when passing the AtoN.

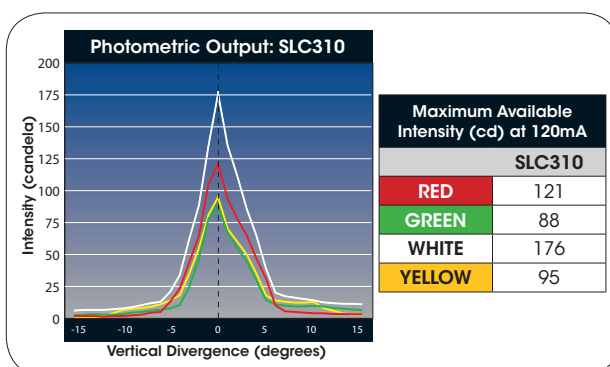
The SLC310 comes with standard rotary switches for convenient in-field changes of flash characters and intensity selection. In addition, the unit may be provided with an IR programmer for added functionality. Programmable features include; flash code adjustment, battery diagnostics and lux adjustment.

### GPS Synchronisation

Sealite has utilised the latest advancements in GPS technology to develop an internal synchronisation system that is incorporated into the SLC310 lantern. Using overhead satellites, lights set to the same flash pattern will flash in unison.

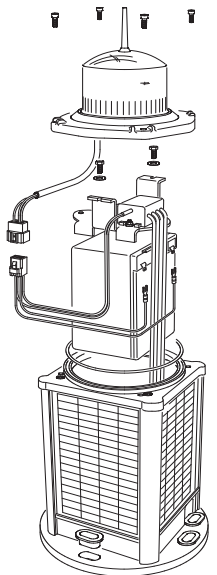
When lanterns flash in synchronisation they can be clearly distinguished from other nav aids and confusing background lighting – ideal for rivers, marina entrances, channel marking and aquaculture.

**Fitted with  
on-board GPS  
as standard**

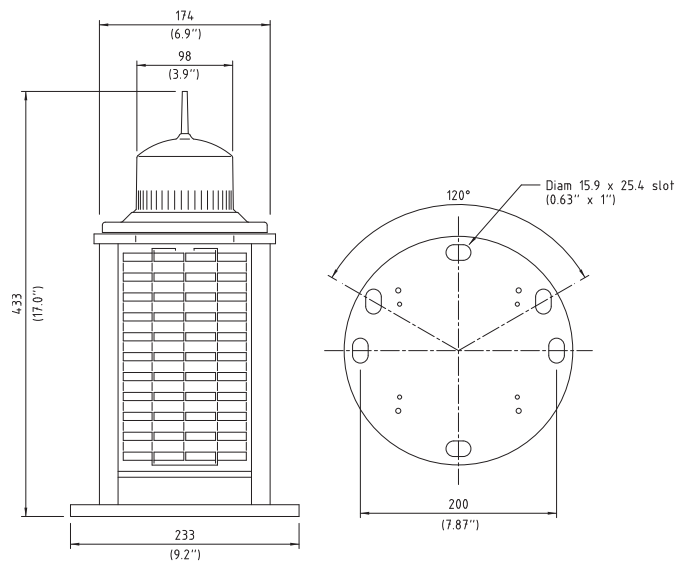


# SLC310

## 3-5nm+ Solar Marine Lantern



Convenient user-replaceable battery



### SPECIFICATIONS •

#### Light Characteristics

Light Source	1 LED
Available Colours	Red, Green, White, Yellow, Blue
Intensity (cd)†	Red - 121 Green - 88 White - 176 Yellow - 95
Visible Range (nm)	3-5+
Horizontal Output (degrees)	360
Vertical Divergence (degrees)	7
Available Flash Characteristics	Up to 256 IALA recommended (user adjustable)
Intensity Adjustments	Adjustable in 25% increments
LED Life Expectancy (hours)	>100,000

#### Electrical Characteristics

Current Draw at advertised intensity (mA)	120
Night Off Current (Eclipse) (mA)	2.5
Day Off Current (mA)	0.6
Circuit Protection	Integrated
Nominal Voltage (V)	12
Autonomy (nights)	>60 (14 hour darkness, 12.5% duty cycle)
Temperature Range	-40 to 80°C

#### Solar Characteristics

Solar Module Type	Multicrystalline
Output (watts)	12 (4 x 3watt)
Solar Module Efficiency (%)	14
Maximum Power Point Voltage (V)	16.2
Charging Regulation	Microprocessor controlled

#### Power Supply

Battery Type	SLA (Sealed Lead Acid)
Battery Capacity (Ah)	12
Nominal Voltage (V)	12
Battery Service Life	Average 5 years

#### Physical Characteristics

Body Material	7-stage powder-coated aluminium chassis with UV-stabilised rubber corners & gaskets
Lens Material	LEXAN® Polycarbonate - UV-stabilised
Lens Diameter (mm/inches)	98 / 3 7/8
Lens Design	Single LED Optic
Mounting	3 & 4 hole bolt pattern on 200mm OD base
Height (mm/inches)	433 / 17
Width (mm/inches)	233 / 9 1/5
Mass (kg/lbs)	9.4 / 20 3/4
Product Life Expectancy	Up to 12 years

#### Certifications

CE	EN61000-6-3:1997. EN61000-6-1:1997
Quality Assurance	ISO9001:2008
Waterproof	IP68

#### Intellectual Property

Trademarks

#### Warranty \*

#### Options Available

SEALITE® is a registered trademark of Sealite Pty Ltd

3 years

- 50mm pole mount adapter plate
- IR Controller
- External ON/OFF Switch
- External Battery Charging Port
- GPS Synchronisation: enable/disable

• Specifications subject to change or variation without notice  
\* Subject to standard terms and conditions  
† Intensity setting subject to solar availability



Morocco



United Arab Emirates



Singapore